

# ***TRAC VAC***

**Model 1080**



## **Operating and Assembly Manual**

**Midwest Equipment Manufacturing, Inc.  
5225 Serum Plant Road  
Thorntown, IN 46071**

# SAFETY RULES

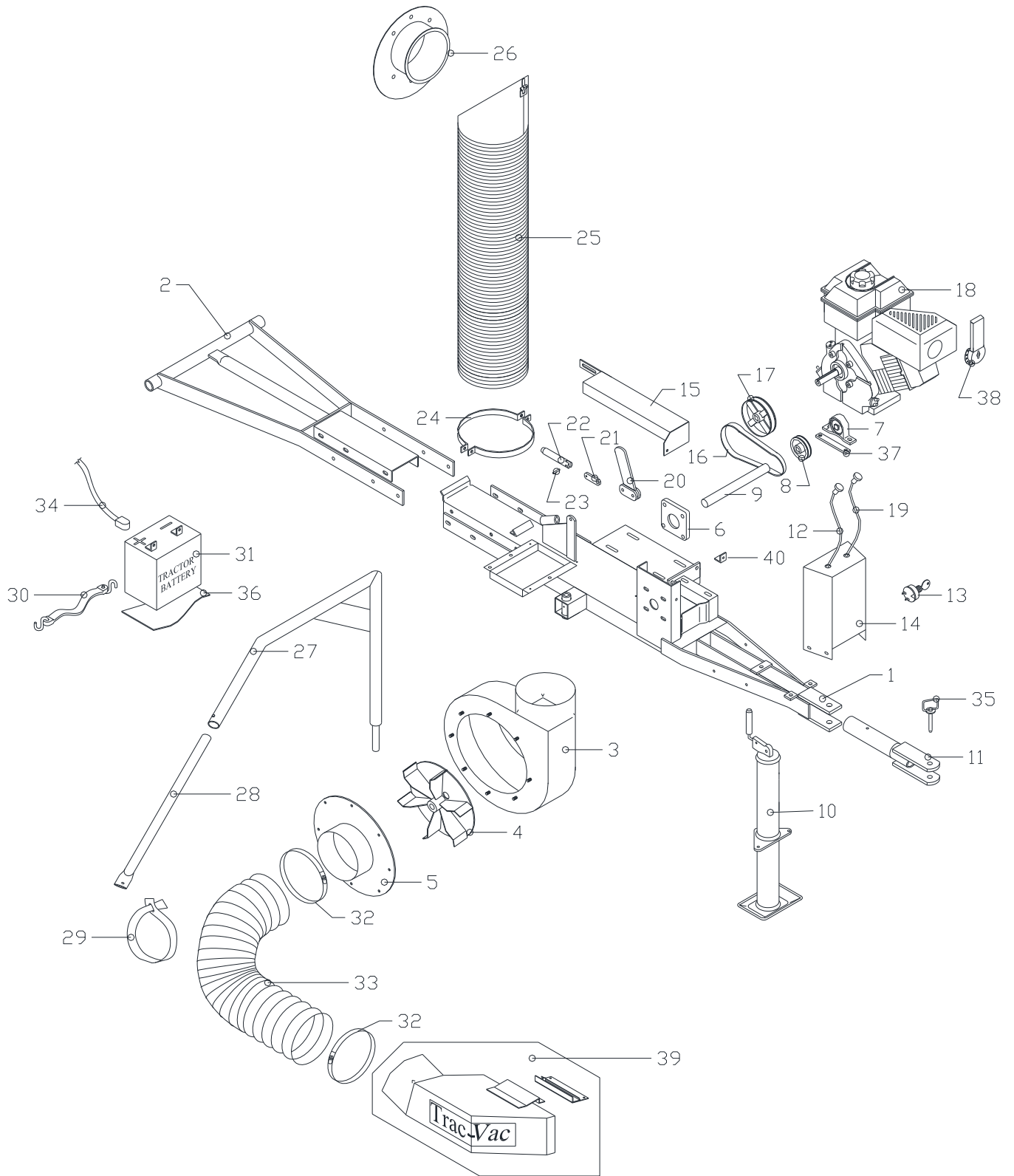
Remember, any power equipment can cause injury if operated improperly or if the user does not understand how to operate the equipment. Exercise caution at all times when using power equipment.



**This symbol means Attention!!!! It is used to point out safety precautions.**

- Read and follow all instructions in this manual before assembly or operation of this equipment. Failure to comply with these instructions may result in personal injury. Keep this manual for future reference and for ordering replacement parts.
- Read this instruction manual carefully. Become familiar with the controls and proper use of this equipment.
- Read the engine owners manual and safe operation rules before using this equipment.
- Never allow children less than 16 years of age to operate the Trac-Vac. Children 16 years and older should operate **only** under close parental supervision.
- Do not allow anyone to operate this equipment without proper instruction.
- Do not allow passengers to ride on the Trac-Vac or on the towing vehicle.
- Keep children and pets out of area of operation.
- Check fuel before starting engine. **Do Not** fill fuel tank indoors, or while engine is running or hot. Wipe off any spilled fuel before starting engine.
- Engine and muffler get **HOT! Do Not** touch! Keep debris from accumulating on or around engine and muffler to avoid fire hazard.
- Allow engine to cool before storing in any enclosed area. Never store Trac-Vac with fuel in tank.
- Do not operate engine if air cleaner or cover is removed, except for adjustments. Removal of the part could create a fire hazard.
- Keep hands, feet, face, long hair and clothing out of inlet and discharge areas. There are **ROTATING BLADES** inside these openings.
- Make certain that all moving parts come to a complete stop before cleaning, repairing or inspection. Disconnect spark plug wire and keep away from plug to prevent accidental starting.
- If Trac-Vac should become clogged with debris, **SHUT OFF ALL ENGINES** and wait until impeller comes to a complete stop before attempting to remove obstruction. Disconnect spark plug wire to prevent accidental starting.
- If excessive vibration occurs while operating your Trac-Vac, stop the engine immediately, disconnect the spark plug wire and allow all moving parts to stop completely before taking the following steps.
  - A. Inspect for damage.
  - B. Repair or replace any damaged parts.
  - C. Check for loose parts and tighten to assure continued safe operation.
- Check all hardware periodically to insure safe operation.
- Check cart cover periodically for wear and replace if worn or damaged.
- **Never** operate Trac-Vac without intake hose and exhaust hose attached in proper place.
- **Do Not** remove exhaust hose or attempt to empty contents of container while engine is running.
- Keep all shields and guards in place and securely attached.
- Always wear eye protection (safety glasses or goggles) when operating this equipment.
- **Do Not** stand behind unit in exhaust discharge area while engine is running.
- **Do Not** operate this equipment while intoxicated or while taking medications that could impair reactions or senses.
- Operate this equipment at reduced ground speed on rough terrain, along creeks and ditches and on slopes to prevent tipping or loss of control.
- Vehicle stability and braking are affected by the addition of this unit. Do not fill the Trac-Vac to its full capacity without checking the capability of the towing vehicle to safely pull and stop with the unit attached.
- **Do Not** operate on slopes in excess of 10 degrees. **STAY OFF OF STEEP SLOPES!**
- Follow the maintenance instructions outlined in this manual.

# 1080 PARTS DRAWING

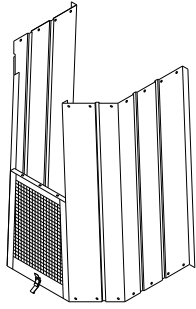


## MODEL 1080 TRAC VAC PARTS LIST

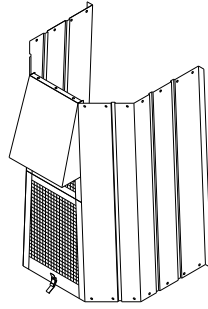
<u>KEY</u>	<u>PART NO.</u>	<u>DESCRIPTION</u>
1	18012	Main Frame, RH
	18014	Main Frame, LH
2	18013	Sub Frame
3	18030	Turbine Housing, RH
	18031	Turbine Housing, LH
4	86040	Turbine, 8HP
5	18050	Inlet
6	85028	Bearing, 1" Flange
7	85029	Bearing, 1" Pillow Block
8	85027	Pulley, 8400 x 1
9	18109	Shaft, 1"
10	18106	Jack
11	18080	Drawbar Extension
12	18132	Throttle Cable
13	18110	Key Switch
14	18107	Control Stand
15	18111	Belt Guard, RH
	18112	Belt Guard, LH
16	18105	Belt, AX35
17	18126	Pulley, AK50 x 1
18	18113	Briggs & Stratton, 342CC IC Elec.
19	18135	Choke Cable
20	88060	Latch Handle
21	88105	Latch Link
22	88104	Latch Pin
23	88103	Latch Adjustment Screw
24	18120	Metal Hose Clamp
25	18040	Metal Exhaust Hose, RH
	18041	Metal Exhaust Hose, LH
26	18070	Cart Connector
27	18071	Support Arm, RH
	18072	Support Arm, LH
28	18125	Support Arm Extension
29	18118	Hose Support Strap
30	18117	Battery Strap
31	18123	Battery
32	18119	Hose Clamp
33	18124	Intake Hose, 8" x 10'
34	18122	Battery Cable
35	58104	Hitch Pin
36	18116	Battery Pad
37	85034	Bearing Support Bracket
38	18115	Muffler Deflector
39	***-8	Chute (tractor specific)
40	180120	Adjustment Support

# Model 280 Cart Cover Assembly Instructions

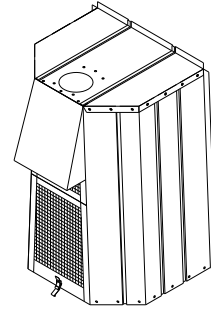
NOTE: Do not tighten any bolts until the end of construction.



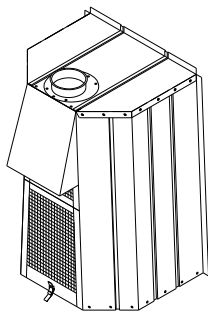
Place side panels on end with decal outward and about a foot apart at top. Place screen with latch, ( rear screen), on end between sides with latch outward and to the floor. Attach to sides with 1/4 x 1/2 bolts.



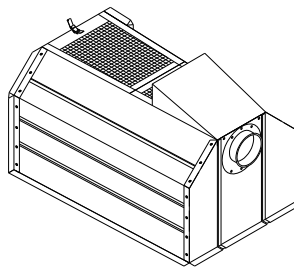
Place screen without latch, (front screen), on top of rear screen and between sides. Secure to rear screen with 1/4 x 1/2 bolts. Slip deflector between sides and front screen with tapered end up. Secure with 1/4 x 1/2 bolts.



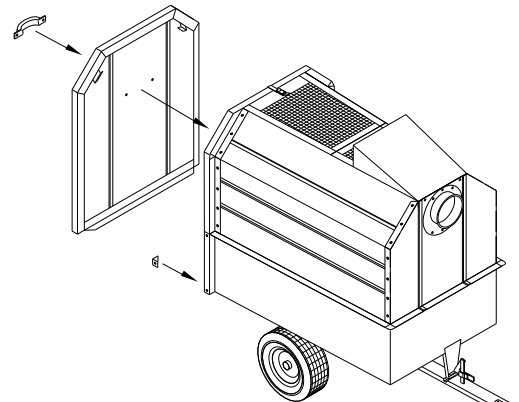
Place front on sides with flanges on outside. Start corner bolts in sides and screen before tightening. Start bolts at top & bottom of side panels and work your way toward center, with truss head, round, to the outside.



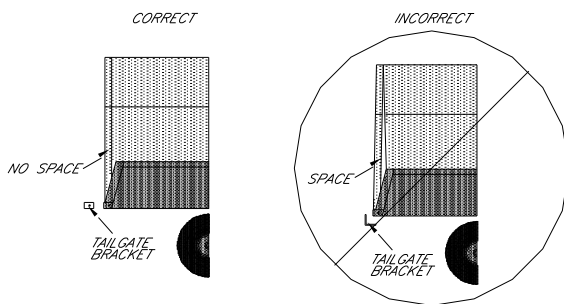
Place connector, (packed in with vac), on outside of front with the lip to the outside. Attach with 1/4 x 1/2 bolts.



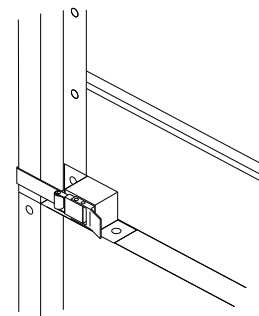
Place cover flat on floor and attach angles to side panels at rear of cover with angles on the outside of cover. Secure with 1/4 x 1/2 bolts. Start at the top and second hole from the bottom, (latch uses bottom hole), then work towards the center of the panels. Bolts truss, (round), head should be to the inside of cart.



Attach handle to tailgate on smooth side. Place cover on cart. Make sure the two lower black angle brackets have been installed on the lower rear of the cart. Fit tailgate to the cover using the top latch and lower brackets only.



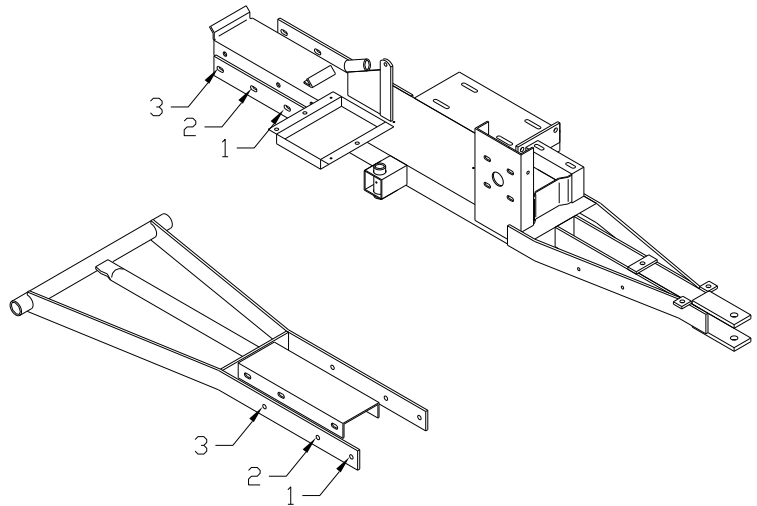
Gently move cover to the rear to insure contact between the tailgate and cover, (along entire contacting surface). Center front on cart. Mark hole locations, and drill 9/32" holes. Attach cover with 1/4 x 1/2 bolts.



Place latch on each side of cart with tongue of latch to rear. Attach to side panel and cart with 1/4 x 1/2 bolts. Tighten all hardware.

## Assembly

The Model 1080 frame has two components: The front frame (18012) and the rear frame (18013). When using the 360 or 368-P Dump cart, slide front frame over rear frame to the shortest position. Using the second and third bolt holes on both front and rear frames, fasten with 3/8" x 1" HHC and nuts. If using the 368-X Cart, use the first and third bolt holes on both the front and rear frames. Secure the center channel as well.



## Service Information

After 2 hours of operation, check belt tension. Belts (16) should have 1/4" vertical slack halfway between pulleys. To adjust, remove belt guard (15). Loosen engine mounting bolts 1/2 turn. Loosen lock nuts on engine adjustment screws and move engine back by tightening inside screw first until proper belt tensioning is obtained. Be careful to maintain belt alignment. Tighten engine bolts and replace belt guard.

Weekly service should include greasing jack shaft bearings, wheels, and support arm with grease gun. Clean engine air filters, oil throttle, and choke cables.

To mount the discharge chute, it is sometimes necessary to remove the deflector shield or lift it out of the way. Place chute adapter on mower deck. Line up holes in chute adapter with holes in mower deck. Attach with hardware supplied and tighten securely. If holes do not line up with holes in chute adapter, place discharge chute in position on mower deck. Mark and drill holes through deck. Attach adapter and discharge chute.



CAUTION!!!!  
SPINNING BLADE

## 280/368L Latch Bracket Installation

1. Remove whizlock nut shown in illustration (Fig. 1)
2. Place latch bracket over bolt and replace whizlock nut.
3. Mark and drill  $\text{Ø}9/32$ " hole for the opposite end of latch bracket. (Fig. 2)
4. Attach latch bracket with 1/4-20 trusshead bolt & whizlock nut provided. (Fig. 3)
5. Repeat steps 1 thru 4 on opposite side of cart. (Fig. 4)

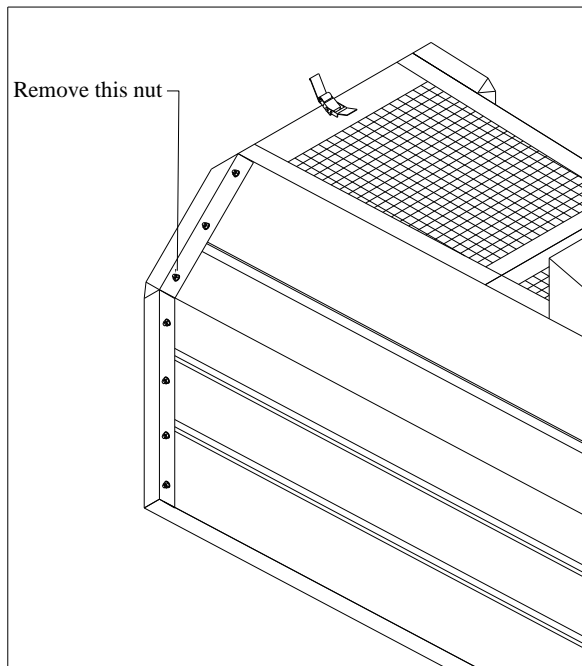


Fig. 1

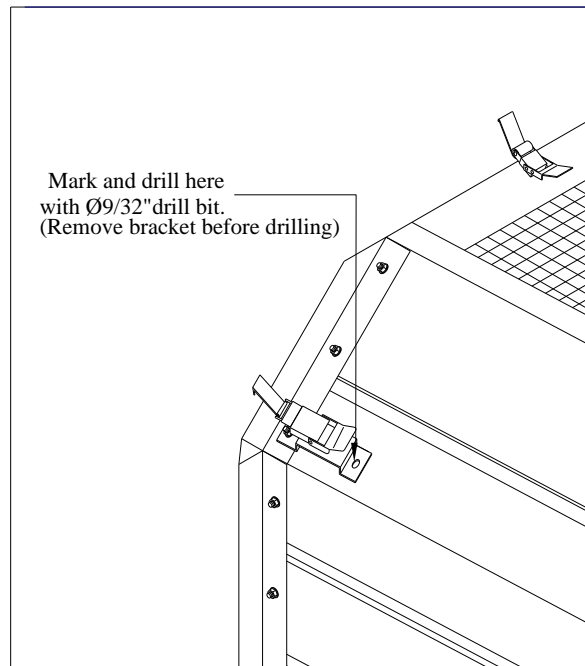


Fig. 2

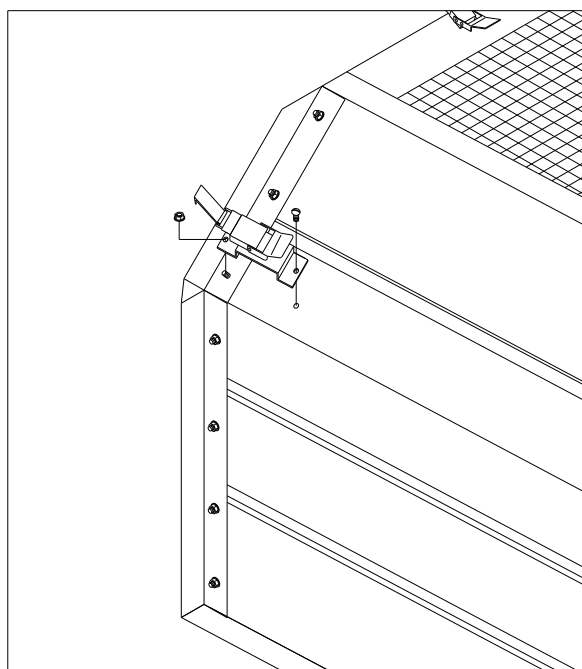


Fig. 3

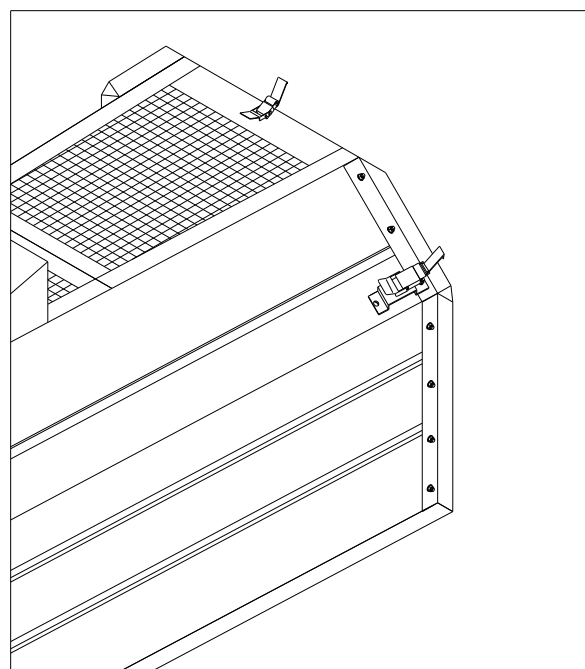
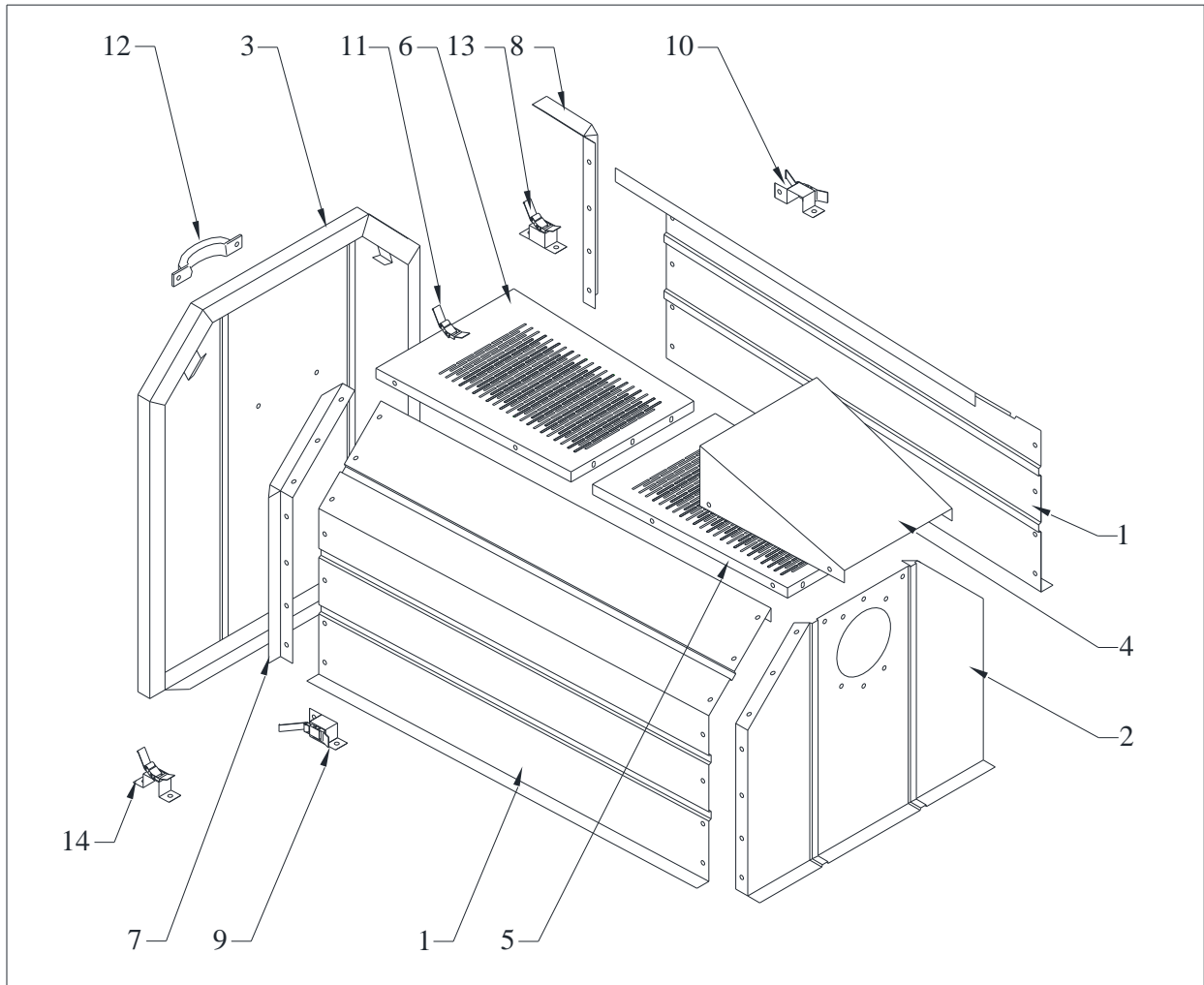


Fig. 4

# Model 348/368L Cart Covers



## Model 280/348L Cart Cover

Key	Part No.	Description
1	28047	Side Panel
2	28030	Front Panel
3	28236	Tailgate
4	28232	Deflector
5	28242	Front Screen
6	28243	Rear Screen
7	28100	Rear Angle RH
8	28101	Rear Angle LH
9	28102	Latch Ass'y RH
10	28103	Latch Ass'y LH
11	28105	Top Latch
12	28104	Handle

## Model 280/368L Cart Cover

Key	Part No.	Description
1	28059	Side Panel
2	28035	Front Panel
3	28238	Tailgate
4	28235	Deflector
5	28240	Front Screen
6	28241	Rear Screen
7	28100	Rear Angle RH
8	28101	Rear Angle LH
9	28102	Latch Ass'y RH
10	28103	Latch Ass'y LH
11	28105	Top Latch
12	28104	Handle
13	28156	Latch Ass'y LH
14	28157	Latch Ass'y RH



# MAINTENANCE



**DANGER:** The Trac-Vac was built to be operated according to the rules for safe operation in this manual. Carelessness or error on the part of the operator can result in serious injury. This unit is capable of amputating fingers or hands and throwing objects. Failure to comply with the safety instructions could result in serious injury or death.

MAINTENANCE SCHEDULE	Before each use	After each use	Every season	Before Storage	Service Dates												
Check engine oil level	X																
Check tire pressure	X																
Check all hardware for tightness	X																
Lubricate			X														
Clean		X		X													
Maintain engine per engine manual																	

## BEFORE EACH USE

### CHECK FOR LOOSE HARDWARE

- Make a thorough visual check of the unit for any bolts and nuts which may have become loose. Retighten any loose nuts and bolts

### CHECK TIRE PRESSURE

- Check tire pressure regularly. The recommended tire pressure is printed on the tire.

### CHECK ENGINE OIL LEVEL

- Check oil level before each use. Maintain engine oil as instructed in engine manual.

### LUBRICATION

- Use a light machine oil to lubricate the axle where the hitch tongue pivots and the latch and pivot bolt at the beginning of each season.
- Grease or oil wheel bearings, using automotive wheel bearing grease at least once every season.



**WARNING:** Always stop engine and disconnect spark plug wire before lubricating, cleaning or before maintenance or repairs.

## ENGINE MAINTENANCE

- Check oil level before each use, maintain engine oil according to the engine manual
- Service air cleaner after every 25 hours of normal conditions. Under extremely dusty conditions, clean every few hours. Poor engine performance usually indicates that the air cleaner needs to be serviced.
- Clean spark plug and reset gap once every season. It is recommended that the spark plug be replaced at the start of each season. Check the engine manual for the correct spark plug and gap specifications.

## CLEANING

- Clean the unit after each use. Grass clippings and leaves can mildew and cause damage if not properly cleaned.
- Clean the engine regularly with a cloth or brush. Remove all dirt and debris from muffler area.

# NOTES



## OPERATING PROCEDURE

**BEFORE STARTING**, Follow the engine manufacturer's instructions in preparing engine for operation. Never fill fuel tank indoors, with engine running or while engine is hot. **Do not smoke while filling tank.**

1. Inspect area to be vacuumed and pickup all harmful objects and litter. Rocks and other harmful debris can do serious damage to vacuum assembly and cause bodily injury.
2. Your vacuum is preset to run at approximately 3800 RPM at no load. Do not slow down engine.
3. For best vacuuming results operate tractor at manufacturer's recommended speed for best cutting. If grass is high, mow first and vacuum on the second pass.
4. **SHUT OFF ENGINE TO UNLOAD.**
5. When operating tractor on slope or grade, exercise extreme caution. Do not cut across grade or slope. Mow directly
6. Periodically check all fasteners for tightness.
7. Listen for unusual vibration of engine or air turbine. If excessive vibration is present, **STOP** engine and check for damage to turbine fan.
8. Always shut off tractor engine and vacuum engine before servicing.
9. Replace deflector shield when discharge chute is removed.
10. When removing clogs, **SHUT OFF ALL ENGINES** and **wait for all moving parts to come to a complete stop!**  
**Failure to do so can cause serious bodily injury!**
11. Do not tow unit on public roads
12. Do not carry passengers on unit.
13. Avoid sudden turns or maneuvers.



CAUTION!!!!  
SPINNING BLADE

## Maintenance

- Your 1080 Trac-Vac has been serviced at the factory for initial operation.
- Check belt tension after the first hour of operation and every ten hours thereafter.
- To adjust pulley, loosen set screw on the side. Close pulley completely turning outer half clockwise until closed. Turn counter clockwise no more than 5 turns. The pulley should be 13/16" wide at the top of the "V"  
Tighten set screw after adjustments have been made.

## TRAC VAC WARRANTY POLICY

Midwest Equipment Manufacturing, Inc. will repair or replace, free of charge, any part, or parts that are defective in material or workmanship or both for a period of one year residential use, and 90 day's for commercial and rental use. The purchaser will pay transportation charges on parts submitted for replacement under warranty. For warranty service, contact your local dealer from whom the unit was purchased. There are no other express or implied warranties. Some states do not allow limitations on how long an implied warranty lasts, and some states do not allow the exclusion or limitation of incidental or consequential damages, so the above limitation and exclusion may not apply to you. This warranty gives you specific legal rights and you may also have other rights, which vary from state to state.

MIDWEST EQUIPMENT MANUFACTURING, INC.-5225 Serum Plant Rd.-

Thorntown, IN 46071

Phone: 1-800-Trac-Vac

Web Page: [www.trac-vac.com](http://www.trac-vac.com) E-Mail: [sales@midmfg.com](mailto:sales@midmfg.com)