

# ***TRAC VAC***

## **MODEL 565**



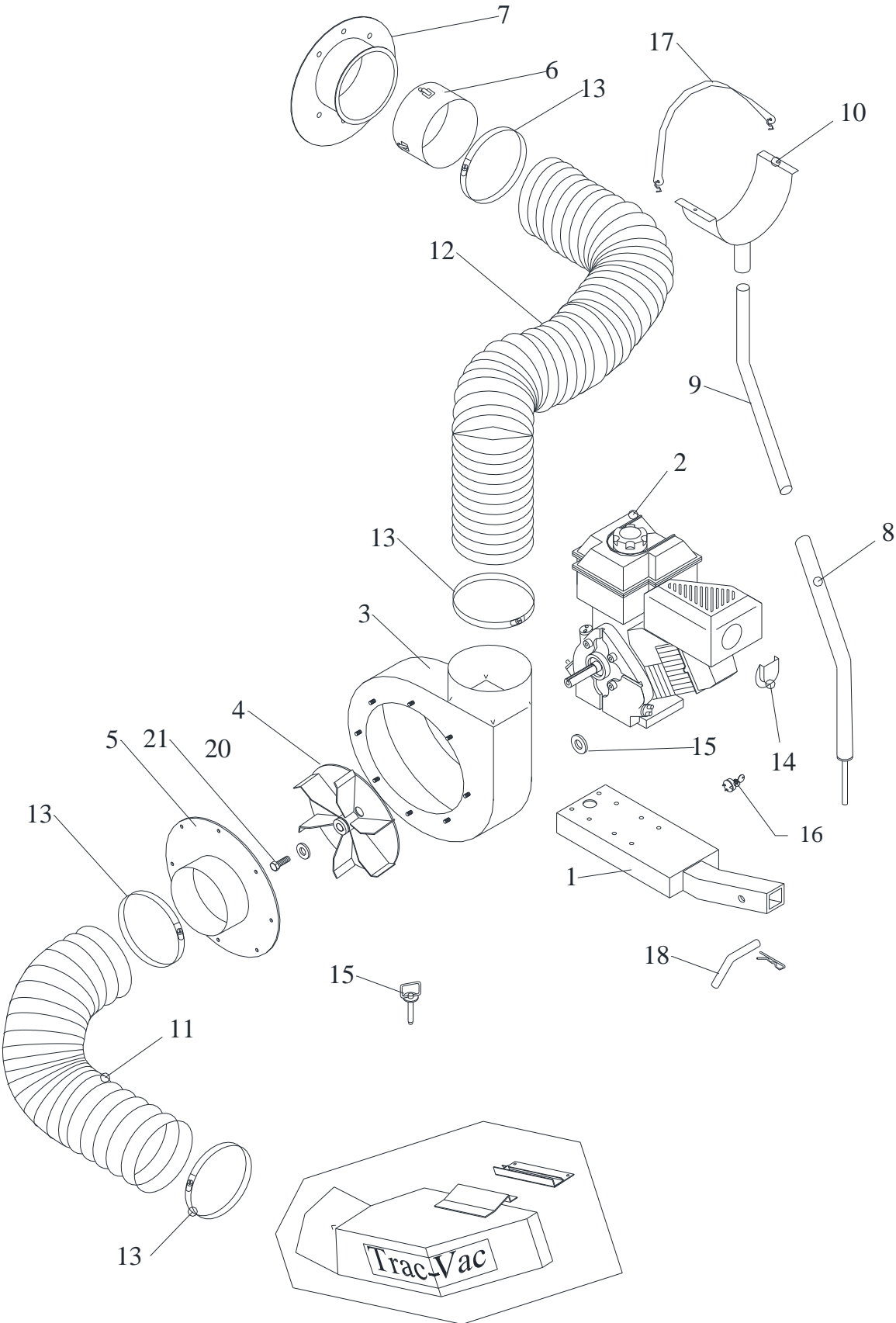
## **Operating and Assembly Manual**

**Midwest Equipment Manufacturing, Inc.  
5225 Serum Plant Road  
Thorntown, IN 46071**

# Model 565 Trac Vac Parts List

Key	Part No.	Description
1	56510-1	Frame, 565 RH
	56513-1	Frame, 565C LH
	56511	Frame, 565 Elec.
2	56021	Engine, 206 I/C, 3/4" Shaft
	56022	Engine, GX160 Honda
	56017	Engine, 203CC Briggs Intec
3	56030	Turbine Housing
	46242	Turbine Housing
4	56040	Turbine, 5HP
	46265	Turbine, 7/8" Bore
5	56050	Inlet, 6"
	66010	Inlet, 8"
6	56060	Hose Connector, 6"
7	56070	Cart Connector, 8"
8	86501	Support Arm
9	86502	Support Arm Extension
10	86503	Hose Support
11	45102	Hose, 6" x 60"
12	58101	Hose 6" x 90"
13	56102	Band Clamp, 6"
14	86504	Muffler Deflector
	560221	Muffler Deflector, Honda, 5.5 HP
	56016A	Muffler Deflector, Kohler
15	58104	Hitch Pin
16	18110	Key Switch (elec. only)
17	18117	Battery Strap
18	85226	Draw Pin
19	86027	Turbine Housing Spacer (Honda & Elec.)
20	56029	Turbine Spacer (Honda only)
21	3130112	Turbine Bolt (Honda)
	3120608	Turbine Bolt
	***-6	Chute Assembly (tractor specific)

# Model 565 Trac-Vac Parts List



# Model 565 Trac Vac Assembly Instructions

1. Attach hitch and drawbar to tractor. Refer to application guide for mounting instructions. Slip square tube on frame (1) inside receiver on hitch. Align holes and secure assembly with 5/8" draw pin (18). Secure pin with hairpin clip.
2. Attach Assembly to frame. With inlet (5) facing toward mower deck discharge opening, align mounting holes on engine to holes on frame and secure with four 5/16" x 1 1/2" HHC and locknuts.
3. Attach cart connector (7) with lip outside, to cart cover front opening. Align holes and secure with six 1/4" x 1/2" truss screws and whizlocks. NOTE: whizlocks should go inside cart cover. Slip hose connector (6) in position, as shown in drawing, into cart connector and secure with clips.
4. Slip support arm (8) assembly pin into tube on drawbar. Slip hose support (10) tube over support arm extension. Rotate support arm assembly so that it angles toward cart.
5. Slip band clamp (13) over each end of 6" x 90" hose (12). Slip one end over turbine housing (3) neck and tighten clamp. Slip remaining end over hose connector and tighten clamp. Rest hose in hose support. Wrap strap (17) over top of hose and hook ends into holes on hose support. Loosen set screw on support arm and adjust hose support height as desired. Tighten set screw.
6. Attach chute to mower deck discharge opening. Slip band clamps (13) over each end of 6" x 60" hose. Slip one end of hose over chute and tighten clamp. Slip remaining end over inlet and tighten clamp.

## TRIMMING HOSE LENGTH

Intake Side: for maximum performance, the intake hose (11) should be routed as straight as possible from chute to inlet without stretching convolutions. Lift deck and allow extra hose length, if necessary. Cut off any excess hose and reattach hose to unit.

Exhaust side: turn tractor as far to the left as possible (turn right for left hand discharge). This will stretch hose to its maximum length. Loosen clamp and cut off any excess length. Reattach hose to unit.

7. Read engine operating instructions and service engine before starting.

## **OPERATING PROCEDURE**

1. Follow engine manufacturer's instructions in preparing engine for operation.
2. Inspect area to be vacuumed and pickup all harmful objects and litter. Rocks and other harmful debris can do serious damage to vacuum assembly and cause bodily injury.
3. For best vacuuming results operate tractor at manufacturer's recommended speed for best cutting. If grass is high, mow first and vacuum on the second pass.
4. When mowing keep discharge chute to the outside of cutting area for better cut and efficient pickup of grass clippings and leaves.
5. Your vacuum is preset to run at approximately 3200-RPM (380), 3800-RPM (385), at no load. Do not slow down engine.
6. **SHUT OFF ENGINE TO UNLOAD.**
7. When operating tractor on slope or grade, exercise extreme caution. Do not cut across grade or slope. Mow directly up and down hills.
8. Periodically check all fasteners for tightness.
9. Listen for unusual vibration of engine or air turbine. If excessive vibration is present, STOP engine and check for damage to turbine fan.
10. Always shut off tractor engine and vacuum engine before servicing.
11. Replace deflector shield when discharge chute is removed.
12. When removing clogs, **SHUT OFF ALL ENGINES.**

## **EXTENDED STORAGE PROCEDURES**

1. Wash and clean vacuum, and lubricate any lubrication points.
2. Drain fuel from the tank and run vacuum until fuel is exhausted in carburetor.
3. Drain and change the engine oil.
4. Clean tires and check pressure. Raising and supporting unit with weight off tires is recommended.
5. When storing a unit with Rubbermaid® containers, leave containers latched to top.

## **TRAC VAC WARRANTY POLICY**

Midwest Equipment Manufacturing, Inc. will repair or replace, free of charge, any part, or parts that are defective in material or workmanship or both for a period of one year residential use, and 90 day's for commercial and rental use. The purchaser will pay transportation charges on parts submitted for replacement under warranty. For warranty service, contact your local dealer from whom the unit was purchased. There are no other express or implied warranties. Some states do not allow limitations on how long an implied warranty lasts, and some states do not allow the exclusion or limitation of incidental or consequential damages, so the above limitation and exclusion may not apply to you. This warranty gives you specific legal rights and you may also have other rights, which vary from state to state.

PALMOR PRODUCTS, INC .5225 Serum Plant Rd. Thorntown, IN 46071

Phone: 1-800-Trac-Vac

Web Page: [www.trac-vac.com](http://www.trac-vac.com) E-Mail: [sales@midmfg.com](mailto:sales@midmfg.com)