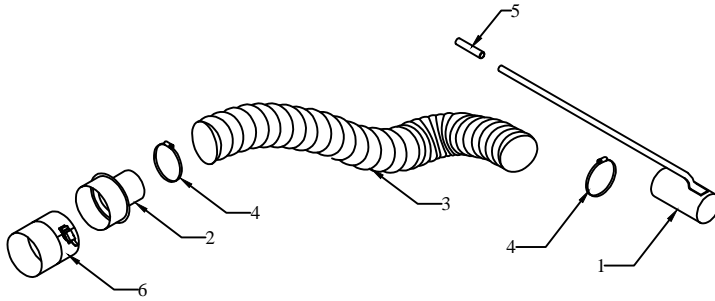


Remote Pick-Up Attachments



Model 150

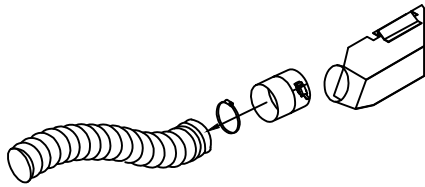
Key	Part no.	Description
1	15010	4" Nozzle Assembly
2	15020	6" to 4" Reducer
3	15031	Hose (4" x 15')
4	15032	Hose Clamp, 4"
5	45107	Handle Grip
6	56104	6" Quick Connect

Model 160

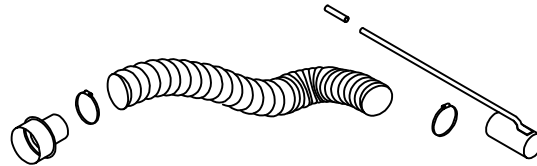
Key	Part no.	Description
1	16010	6" Nozzle Assembly
2	16020	6" Splice Connector
3	16030	Hose (6" x 12')
4	56102	Hose Clamp, 6"
5	45107	Handle Grip
6	56104	6" Quick Connect

Model 190

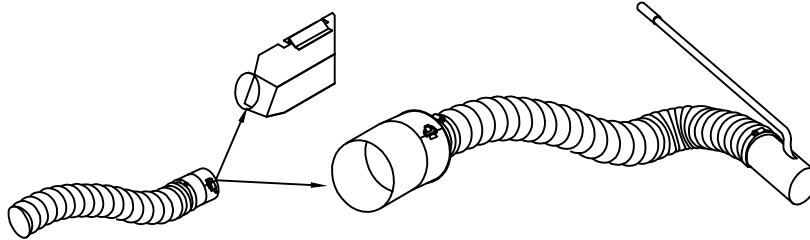
Key	Part no.	Description
1	16010	6" Nozzle Assembly
2	19020	8" to 6" Reducer
3	16030	Hose (6" x 12')
4	56102	Hose Clamp, 6"
5	45107	Handle Grip
6	86102	8" Quick Connect



Step 1. Remove deck chute from the end of the vacuum intake hose. Slip quick connect inside hose and secure with band clamp.



Step 2. Assemble remote pick-up by slipping band clamp over remote hose. Slide nozzle into end of hose and secure with band clamp. Connect reducer (or splice, depending on remote) in same manner.



Switching from chute to remote is as easy as flipping the latch on the quick disconnect. Your Remote Pick Up Attachment will extend approximately 20 feet from your sweeper. Keep your hose as straight as possible for best results.

Midwest Equipment Mfg.
5225 Serum plant Road
Thorntown, In 46071
Web Page: www.trac-vac.com
E-Mail: sales@trac-vac.com